

# From Nervous to Nimble

King's Digital's journey  
**towards** online  
copyright confidence



## ABOUT KING'S DIGITAL

- A large online course production team (learning designers and developers).
- Working in partnership with academics in all faculties.

# CHALLENGES



1

We needed clearer guidelines



2

Our courses are all online with many students being overseas



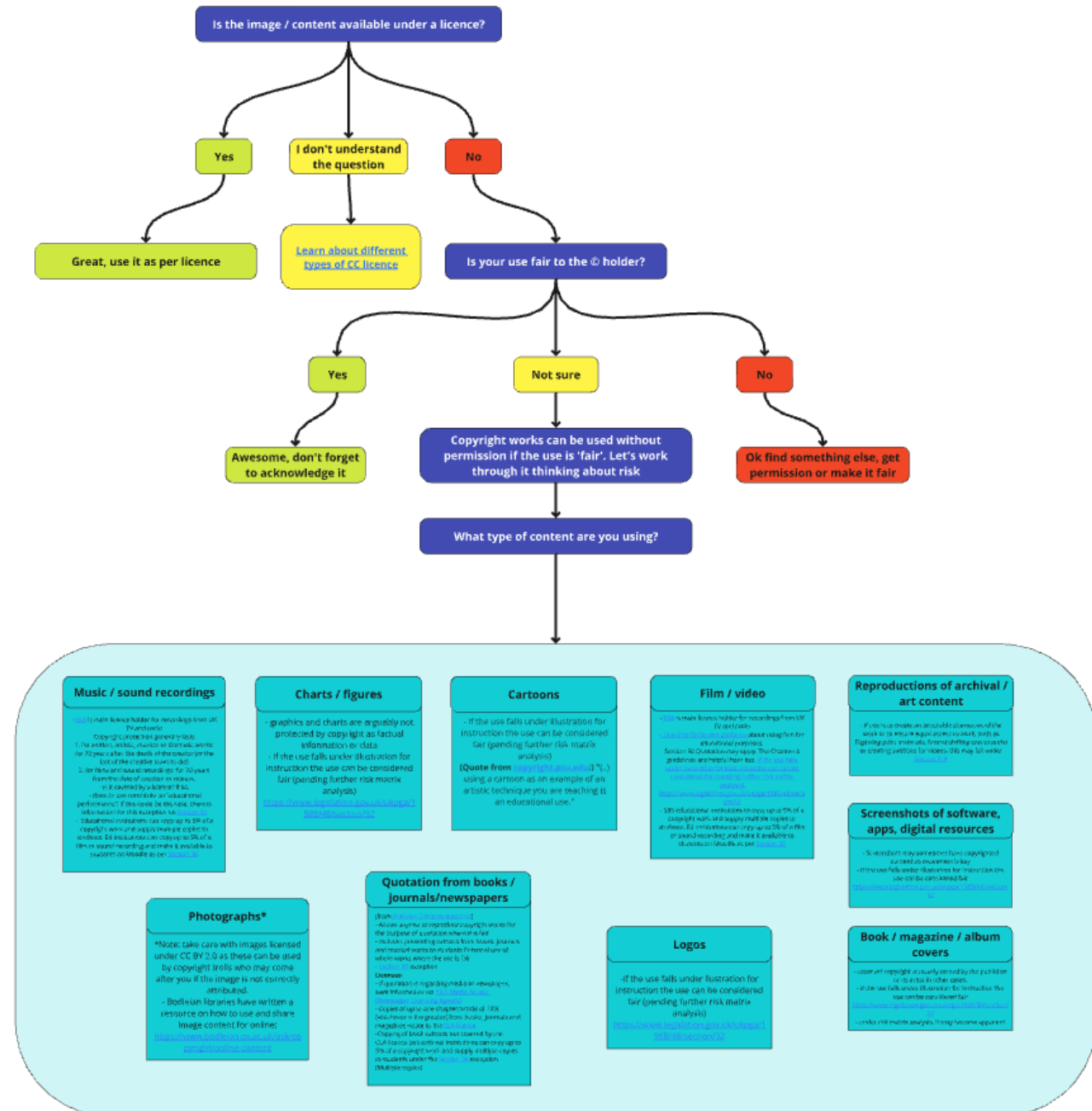
# STARTING OUR COPYRIGHT JOURNEY



# Creating our first set of resources

## Resource 1

Responsive and editable decision tree  
made using Miro



## Resource 2

Responsive and editable decision tree made using Miro

	Low risk	Medium risk	High risk
Nature of access	In Keats / behind a password	Partner-hosted, KCL don't manage enrolments	Publicly accessible no password
How much	The amount needed to support the learning		More than is needed to support the learning
Pedagogic intent	Integral to the learning		Not integral to the learning
How is it incorporated	Linked to Embedded in Media	© work accessible as standalone asset	
Image resolution	Low resolution	Higher resolution	
Factual / Artistic	Facts / data arranged without needing creativity e.g. data in a table	Artistic / creative work (Clearly author's own intellectual creation)	
Acknowledgement / attribution	Academic citation Title / author / creator Acknowledgement obvious from content		No citation or acknowledgement
Nature of rights holder	Open / public enterprise	Tolerant professional creator	Active enforcer

**View our short scenario video**

Video

# CONCLUSION



1

Roll out within our department, academic colleagues that we work and KCL-wide



2

Make our resources publicly available via a creative commons license